



DFS GUARANTEED INVESTMENT FUNDS

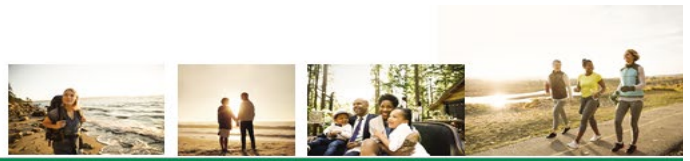
Guaranteed Investment Funds Performance*

For the period ended March 31, 2020

	1 month	3 months	6 months	YTD	1 year	3 years	5 years	10 years	Since Inception
DFS GIF - CONSERVATIVE									
Series 5 (S905)	-4.31	-2.74	-2.74	-2.74	-0.37	0.96	-	-	1.44
Series 6 (S906C)	-4.31	-2.80	-2.80	-2.80	-0.36	1.04	0.61	-	1.73
Series 7 (S907A)	-4.18	-2.72	-2.55	-2.72	0.35	1.68	1.18	-	2.26
Series 8 (S908C)	-4.22	-2.79	-2.61	-2.79	0.00	-	-	-	2.25
DFS GIF - MODERATE									
Series 5 (S915)	-5.07	-4.74	-3.72	-4.74	-1.27	1.13	-	-	1.87
Series 6 (S916C)	-4.97	-4.49	-3.69	-4.49	-1.03	1.31	1.06	-	2.29
Series 7 (S917A)	-4.97	-4.51	-3.42	-4.51	-0.67	1.87	1.62	-	2.84
Series 8 (S918C)	-4.95	-4.60	-3.53	-4.60	-0.76	-	-	-	1.95
DFS GIF - BALANCED									
Series 5 (S925)	-5.75	-6.54	-4.79	-6.54	-2.11	1.35	-	-	2.45
Series 6 (S926C)	-5.73	-6.33	-4.52	-6.33	-1.82	1.57	1.54	-	2.81
Series 7 (S927A)	-5.56	-6.29	-4.38	-6.29	-1.29	2.10	2.05	-	3.34
Series 8 (S928C)	-5.67	-6.35	-4.44	-6.35	-1.53	-	-	-	1.64
DFS GIF - GROWTH									
Series 5 (S935)	-6.56	-8.36	-5.79	-8.36	-3.06	1.57	-	-	2.98
Series 6 (S936C)	-6.53	-8.35	-5.67	-8.35	-2.84	1.74	1.97	-	3.45
Series 7 (S937A)	-6.50	-8.26	-5.38	-8.26	-2.31	2.31	2.48	-	3.94
Series 8 (S938C)	-6.39	-8.23	-5.35	-8.23	-2.47	-	-	-	1.33
DFS GIF - MAXIMUM GROWTH									
Series 5 (S945)	-7.26	-10.09	-6.52	-10.09	-3.76	1.88	-	-	3.70
Series 6 (S946C)	-7.20	-10.10	-6.51	-10.10	-3.66	1.97	2.47	-	3.92
Series 7 (S947A)	-7.25	-9.94	-6.32	-9.94	-3.26	2.53	2.99	-	4.45
Series 8 (S948C)	-7.30	-10.09	-6.45	-10.09	-3.42	-	-	-	0.82
DFS GIF - CONSERVATIVE - DESJARDINS SOCIETERRA									
Series 5 (S985)	-6.06	-5.36	-4.48	-5.36	-1.54	-	-	-	1.23
Series 6 (S986C)	-6.22	-5.35	-4.47	-5.35	-1.54	-	-	-	1.34
Series 7 (S987A)	-6.16	-5.30	-4.25	-5.30	-0.96	-	-	-	1.85
Series 8 (S988C)	-6.18	-5.32	-4.44	-5.32	-1.15	-	-	-	1.64
DFS GIF - BALANCED - DESJARDINS SOCIETERRA									
Series 5 (S975)	-6.87	-7.19	-5.41	-7.19	-2.34	0.88	-	-	1.83
Series 6 (S976C)	-6.84	-7.00	-5.22	-7.00	-2.15	1.00	-	-	1.95
Series 7 (S977A)	-6.84	-6.84	-4.94	-6.84	-1.59	1.60	-	-	2.49
Series 8 (S978C)	-6.87	-7.04	-5.16	-7.04	-1.90	-	-	-	1.54
DFS GIF - GROWTH - DESJARDINS SOCIETERRA									
Series 5 (S995)	-7.89	-8.89	-6.34	-8.89	-3.09	-	-	-	0.21
Series 6 (S996C)	-7.89	-8.89	-6.34	-8.89	-3.09	-	-	-	0.21
Series 7 (S997A)	-7.82	-8.81	-6.11	-8.81	-2.69	-	-	-	0.72
Series 8 (S998C)	-7.83	-8.83	-6.12	-8.83	-2.69	-	-	-	0.62
DFS GIF - MAXIMUM GROWTH - DESJARDINS SOCIETERRA									
Series 5 (S015)	-8.96	-11.23	-7.61	-11.23	-4.41	-	-	-	-0.21
Series 6 (S016C)	-8.76	-11.19	-7.41	-11.19	-4.21	-	-	-	0.00
Series 7 (S017A)	-8.68	-10.93	-7.17	-10.93	-3.63	-	-	-	0.52
Series 8 (S018C)	-8.71	-10.97	-7.37	-10.97	-3.82	-	-	-	0.31

Desjardins Insurance refers to Desjardins Financial Security Life Assurance Company.





DFS GUARANTEED INVESTMENT FUNDS

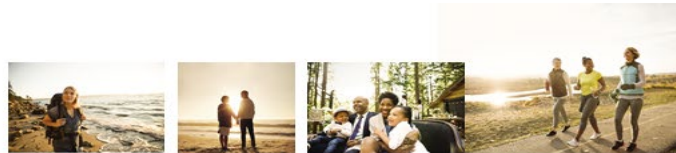
Guaranteed Investment Funds Performance*

For the period ended March 31, 2020

	1 month	3 months	6 months	YTD	1 year	3 years	5 years	10 years	Since Inception
DFS GIF - MONEY MARKET									
Series 1 (551)	0.00	0.00	0.15	0.00	0.30	0.00	-0.20	-0.25	1.13
Series 3 (555)	-0.15	0.00	0.15	0.00	0.30	0.00	-0.20	-0.25	0.90
Series 5 (S555)	0.00	0.15	0.29	0.15	0.73	0.39	0.15	0.08	0.25
Series 6 (S556C)	0.00	0.20	0.39	0.20	0.79	0.59	0.40	-	0.39
Series 7 (S557A)	0.00	0.38	0.57	0.38	1.34	1.16	0.93	-	0.93
Series 8 (S558C)	0.20	0.39	0.79	0.39	1.39	-	-	-	1.23
Series G (55IGP)	-0.10	0.10	0.10	0.10	0.30	0.07	-0.13	-	-0.11
DFS GIF - INCOME - FIERA CAPITAL									
Series 1 (521)	-1.33	1.46	0.10	1.46	2.16	0.95	-0.01	1.64	3.05
Series 3 (525)	-1.24	1.55	0.36	1.55	2.58	1.32	0.34	1.97	2.81
Series 5 (S525)	-1.15	1.78	0.67	1.78	3.18	1.96	0.99	2.62	3.14
Series 6 (S526C)	-1.21	1.78	0.71	1.78	3.44	2.13	1.17	-	2.20
Series 7 (S527A)	-1.17	1.90	1.03	1.90	3.88	2.68	1.69	-	2.72
Series 8 (S528C)	-1.27	1.87	0.93	1.87	3.61	-	-	-	4.55
DFS GIF - CANADIAN BOND									
Series 5 (S955)	-2.38	0.76	-0.56	0.76	2.11	1.61	-	-	1.44
Series 6 (S956C)	-2.36	0.94	-0.37	0.94	2.48	1.80	-	-	1.66
Series 7 (S957A)	-2.30	0.92	-0.18	0.92	2.99	2.41	-	-	2.20
Series 8 (S958C)	-2.35	0.93	-0.18	0.93	2.66	-	-	-	4.06
DFS GIF - GLOBAL TACTICAL BOND -									
Series 5 (S025)	-11.71	-9.45	-7.63	-9.45	-	-	-	-	-8.00
Series 6 (S026C)	-11.54	-9.45	-7.63	-9.45	-	-	-	-	-8.00
Series 7 (S027A)	-11.49	-9.23	-7.23	-9.23	-	-	-	-	-7.60
Series 8 (S028C)	-11.49	-9.23	-7.23	-9.23	-	-	-	-	-7.60
DFS GIF - DIVERSIFIED INCOME - FRANKLIN QUOTENTIAL									
Series 3 (355)	-5.61	-4.86	-4.99	-4.86	-3.21	-0.82	-0.61	2.36	1.92
Series 5 (S355)	-5.58	-4.73	-4.73	-4.73	-2.87	-0.53	-0.36	2.60	2.48
Series 6 (S356C)	-5.51	-4.66	-4.66	-4.66	-2.74	-0.37	-0.16	-	1.02
Series 7 (S357A)	-5.51	-4.52	-4.36	-4.52	-2.31	0.18	0.33	-	1.55
Series 8 (S358C)	-5.66	-4.58	-4.58	-4.58	-2.53	-	-	-	0.00
DFS GIF - BALANCED INCOME - FRANKLIN QUOTENTIAL									
Series 3 (345)	-7.05	-7.70	-6.92	-7.70	-5.45	-1.28	-0.87	2.49	1.43
Series 5 (S345)	-6.96	-7.59	-6.83	-7.59	-5.15	-1.01	-0.61	2.76	2.04
Series 6 (S346C)	-7.03	-7.51	-6.71	-7.51	-4.91	-0.85	-0.43	-	1.33
Series 7 (S347A)	-6.84	-7.31	-6.38	-7.31	-4.45	-0.30	0.06	-	1.82
Series 8 (S348C)	-6.88	-7.41	-6.53	-7.41	-4.51	-	-	-	-1.35
DFS GIF - CANADIAN BALANCED - FIDELITY									
Series 3 (245)	-10.63	-10.71	-9.76	-10.71	-6.75	-0.68	-0.32	3.76	5.58
Series 5 (S245)	-10.63	-10.71	-9.63	-10.71	-6.39	-0.27	0.09	4.17	5.99
Series 6 (S246C)	-10.51	-10.65	-9.53	-10.65	-6.16	-0.11	0.24	-	2.44
Series 7 (S247A)	-10.63	-10.63	-9.41	-10.63	-5.69	0.39	0.77	-	2.95
Series 8 (S248C)	-10.51	-10.51	-9.36	-10.51	-5.90	-	-	-	-0.62
DFS GIF - U.S. MONTHLY INCOME - FIDELITY									
Series 5 (S965)	-6.85	-7.61	-6.55	-7.61	-3.71	0.77	-	-	3.02
Series 6 (S966C)	-6.68	-7.58	-6.53	-7.58	-3.54	0.89	-	-	3.10
Series 7 (S967A)	-6.68	-7.41	-6.23	-7.41	-3.14	1.40	-	-	3.66
Series 8 (S968C)	-6.88	-7.69	-6.38	-7.69	-3.47	-	-	-	2.85

Desjardins Insurance refers to Desjardins Financial Security Life Assurance Company.

 **Desjardins**
Insurance
Life • Health • Retirement



DFS GUARANTEED INVESTMENT FUNDS

Guaranteed Investment Funds Performance*

For the period ended March 31, 2020

	1 month	3 months	6 months	YTD	1 year	3 years	5 years	10 years	Since Inception
DFS GIF - GLOBAL BALANCED - JARISLOWSKY FRASER									
Series 3 (205)	-7.26	-9.61	-7.57	-9.61	-5.87	-0.80	0.30	3.98	3.05
Series 5 (S205)	-7.25	-9.47	-7.35	-9.47	-5.43	-0.27	0.81	4.49	3.18
Series 6 (S206C)	-7.24	-9.43	-7.24	-9.43	-5.28	-0.12	-	-	1.66
Series 7 (S207A)	-7.09	-9.24	-6.94	-9.24	-4.68	0.43	-	-	2.16
Series 8 (S208C)	-7.10	-9.31	-7.10	-9.31	-4.97	-	-	-	-0.31
DFS GIF - CANADIAN BALANCED - FIERA CAPITAL									
Series 1 (491)	-6.07	-7.79	-6.81	-7.79	-3.66	0.90	0.92	2.95	3.10
Series 3 (493)	-5.93	-7.61	-6.45	-7.61	-2.94	1.56	1.57	3.57	3.03
Series 5 (S493)	-5.94	-7.50	-6.22	-7.50	-2.36	2.20	2.21	4.16	2.88
Series 6 (S496C)	-5.96	-7.48	-6.24	-7.48	-2.32	2.21	2.19	-	3.89
Series 7 (S497A)	-5.79	-7.40	-5.92	-7.40	-1.81	2.70	2.71	-	4.42
Series 8 (S498C)	-5.84	-7.48	-6.17	-7.48	-2.03	-	-	-	3.26
DFS GIF - BALANCED GROWTH - FRANKLIN QUOTENTIAL									
Series 3 (365)	-8.49	-10.50	-8.90	-10.50	-7.39	-1.68	-1.03	2.83	1.56
Series 5 (S365)	-8.45	-10.38	-8.71	-10.38	-7.12	-1.42	-0.74	3.14	1.88
Series 6 (S366C)	-8.39	-10.34	-8.54	-10.34	-6.83	-1.19	-0.55	-	1.45
Series 7 (S367A)	-8.47	-10.37	-8.47	-10.37	-6.49	-0.70	-0.08	-	1.94
Series 8 (S368C)	-8.30	-10.21	-8.48	-10.21	-6.50	-	-	-	-2.62
DFS GIF - CANADIAN BALANCED - CI									
Series 5 (S265)	-8.58	-11.43	-9.19	-11.43	-7.21	-1.42	-0.36	-	3.18
Series 6 (S266C)	-8.75	-11.52	-9.05	-11.52	-7.21	-1.29	-0.18	-	1.67
Series 7 (S267A)	-8.65	-11.35	-8.95	-11.35	-6.71	-0.75	0.32	-	2.17
Series 8 (S268C)	-8.61	-11.39	-8.97	-11.39	-6.79	-	-	-	-3.47
DFS GIF - INCOME AND GROWTH - CI									
Series 5 (S855)	-10.86	-14.25	-11.36	-14.25	-9.46	-2.02	-0.59	-	3.17
Series 6 (S856C)	-10.89	-14.29	-11.48	-14.29	-9.40	-1.96	-0.47	-	1.27
Series 7 (S857A)	-10.88	-14.18	-11.16	-14.18	-8.99	-1.40	0.06	-	1.79
Series 8 (S858C)	-10.78	-14.15	-11.13	-14.15	-9.00	-	-	-	-4.76
DFS GIF - GROWTH AND INCOME - NEI									
Series 3 (S585)	-13.55	-17.65	-16.33	-17.65	-15.21	-3.36	-0.68	3.31	1.04
Series 5 (S585)	-13.65	-17.55	-16.10	-17.55	-14.72	-2.75	-0.03	3.94	1.92
Series 6 (S586C)	-13.61	-17.52	-16.00	-17.52	-14.55	-2.66	0.07	-	1.45
Series 7 (S587A)	-13.52	-17.33	-15.84	-17.33	-14.18	-2.15	0.58	-	1.97
Series 8 (S588C)	-13.49	-17.42	-15.83	-17.42	-14.34	-	-	-	-6.83
DFS GIF - GLOBAL GROWTH - NEI SELECT									
Series 3 (S535)	-12.01	-16.99	-13.81	-16.99	-12.65	-3.05	-0.71	2.94	2.01
Series 5 (S535)	-12.05	-16.91	-13.61	-16.91	-12.15	-2.40	-0.04	3.63	1.61
Series 6 (S536C)	-11.94	-16.84	-13.46	-16.84	-11.94	-2.25	0.11	-	1.67
Series 7 (S537A)	-12.06	-16.81	-13.26	-16.81	-11.51	-1.70	0.63	-	2.14
Series 8 (S538C)	-11.88	-16.67	-13.26	-16.67	-11.71	-	-	-	-5.84



DFS GUARANTEED INVESTMENT FUNDS

Guaranteed Investment Funds Performance*

For the period ended March 31, 2020

	1 month	3 months	6 months	YTD	1 year	3 years	5 years	10 years	Since Inception
DFS GIF - CANADIAN ASSET ALLOCATION - CI CAMBRIDGE									
Series 5 (S865)	-10.16	-12.24	-10.63	-12.24	-8.34	-2.20	-0.22	-	4.20
Series 6 (S866C)	-10.18	-12.30	-10.61	-12.30	-8.25	-2.07	-0.05	-	1.76
Series 7 (S867A)	-10.19	-12.12	-10.33	-12.12	-7.73	-1.52	0.45	-	2.26
Series 8 (S868C)	-10.17	-12.32	-10.51	-12.32	-7.92	-	-	-	-2.40
DFS GIF - GROWTH - FRANKLIN QUOTENTIAL									
Series 3 (335)	-9.67	-13.24	-10.80	-13.24	-9.52	-2.40	-1.51	2.88	0.68
Series 5 (S335)	-9.65	-13.19	-10.60	-13.19	-9.24	-2.03	-1.11	3.28	1.41
Series 6 (S336C)	-9.74	-13.17	-10.47	-13.17	-8.99	-1.71	-0.82	-	1.48
Series 7 (S337A)	-9.49	-12.98	-10.21	-12.98	-8.31	-1.21	-0.34	-	1.97
Series 8 (S338C)	-9.59	-12.99	-10.29	-12.99	-8.51	-	-	-	-4.00
DFS GIF - DIVIDEND INCOME - DESJARDINS									
Series 3 (035)	-14.29	-16.33	-15.83	-16.33	-	-	-	-	-16.00
Series 5 (S035)	-14.23	-16.10	-15.43	-16.10	-	-	-	-	-15.60
Series 6 (S036C)	-14.23	-16.10	-15.43	-16.10	-	-	-	-	-15.60
Series 7 (S037A)	-14.20	-16.07	-15.23	-16.07	-	-	-	-	-15.40
Series 8 (S038C)	-14.20	-16.07	-15.23	-16.07	-	-	-	-	-15.40
DFS GIF - CANADIAN DIVIDEND - NEI									
Series 5 (S885)	-19.27	-26.58	-25.03	-26.58	-22.40	-7.50	-2.56	-	3.36
Series 6 (S886C)	-19.31	-26.53	-24.96	-26.53	-22.24	-7.31	-2.38	-	-0.23
Series 7 (S887A)	-19.33	-26.49	-24.85	-26.49	-21.95	-6.86	-1.95	-	0.16
Series 8 (S888C)	-19.40	-26.59	-24.95	-26.59	-22.05	-	-	-	-10.54
DFS GIF - CANADIAN EQUITY - JARISLOWSKY FRASER									
Series 3 (235)	-17.77	-21.14	-19.24	-21.14	-17.45	-5.57	-1.70	1.93	1.67
Series 5 (S235)	-17.72	-21.03	-18.99	-21.03	-16.93	-4.95	-1.06	2.57	1.16
Series 6 (S236C)	-17.70	-20.99	-18.91	-20.99	-16.86	-4.89	-	-	-0.32
Series 7 (S237A)	-17.65	-20.88	-18.71	-20.88	-16.42	-4.41	-	-	0.18
Series 8 (S238C)	-17.59	-20.96	-18.80	-20.96	-16.51	-	-	-	-5.84
DFS GIF - CANADIAN EQUITY - FIDELITY TRUE NORTH®									
Series 3 (255)	-11.85	-14.67	-13.65	-14.67	-9.64	-1.50	-0.44	3.78	6.42
Series 5 (S255)	-11.87	-14.59	-13.46	-14.59	-9.37	-1.14	-0.08	4.17	6.80
Series 6 (S256C)	-11.86	-14.52	-13.48	-14.52	-9.16	-0.98	0.09	-	2.02
Series 7 (S257A)	-11.80	-14.52	-13.24	-14.52	-8.76	-0.51	0.61	-	2.55
Series 8 (S258C)	-11.80	-14.44	-13.21	-14.44	-8.82	-	-	-	-1.46
DFS GIF - CANADIAN EQUITY - FRANKLIN BISSETT									
Series 1 (721)	-14.74	-19.09	-17.53	-19.09	-14.91	-5.68	-	-	-4.54
Series 3 (725)	-14.54	-18.88	-17.34	-18.88	-14.41	-5.25	-1.78	3.47	3.97
Series 5 (S725)	-14.53	-18.79	-17.07	-18.79	-13.90	-4.68	-1.18	4.04	2.35
Series 6 (S726C)	-14.55	-18.81	-16.94	-18.81	-13.82	-4.57	-1.02	-	0.16
Series 7 (S727A)	-14.47	-18.62	-16.80	-18.62	-13.33	-4.07	-0.54	-	0.65
Series 8 (S728C)	-14.53	-18.82	-16.88	-18.82	-13.55	-	-	-	-4.97
Series G (721GP)	-14.49	-18.72	-16.85	-18.72	-13.42	-4.14	-	-	-3.00
DFS GIF - SPECIALTY EQUITY - NEI NORTHWEST									
Series 3 (595)	-23.33	-27.44	-24.87	-27.44	-23.59	-12.18	-6.19	-1.47	-0.84
Series 5 (S595)	-23.37	-27.41	-24.69	-27.41	-23.25	-11.70	-5.69	-0.94	-1.88
Series 6 (S596C)	-23.39	-27.43	-24.73	-27.43	-23.21	-11.72	-5.64	-	-5.95
Series 7 (S597A)	-23.43	-27.37	-24.57	-27.37	-22.93	-11.31	-5.22	-	-5.55
Series 8 (S598C)	-23.21	-27.27	-24.40	-27.27	-22.87	-	-	-	-17.57



DFS GUARANTEED INVESTMENT FUNDS

Guaranteed Investment Funds Performance*

For the period ended March 31, 2020

	1 month	3 months	6 months	YTD	1 year	3 years	5 years	10 years	Since Inception
DFS GIF - SMALL CAP - FRANKLIN BISSETT									
Series 3 (735)	-28.15	-35.85	-33.03	-35.85	-37.98	-23.30	-14.83	-4.15	1.91
Series 5 (S735)	-28.17	-35.83	-32.88	-35.83	-37.66	-22.85	-14.32	-3.61	-3.61
Series 6 (S736C)	-28.18	-35.69	-32.80	-35.69	-37.61	-22.84	-14.31	-	-13.33
Series 7 (S737A)	-28.04	-35.65	-32.81	-35.65	-37.35	-22.52	-14.06	-	-13.06
Series 8 (S738C)	-28.13	-35.79	-32.86	-35.79	-37.50	-	-	-	-32.30
DFS GIF - AMERICAN EQUITY - MFS									
Series 3 (845)	-8.84	-14.56	-10.67	-14.56	-6.73	3.13	4.60	8.87	2.41
Series 5 (S845)	-8.80	-14.38	-10.29	-14.38	-6.08	3.92	5.39	9.64	6.01
Series 6 (S846C)	-8.69	-14.30	-10.21	-14.30	-5.93	4.01	5.44	-	8.21
Series 7 (S847A)	-8.69	-14.26	-10.08	-14.26	-5.57	4.47	5.92	-	8.67
Series 8 (S848C)	-8.68	-14.19	-10.09	-14.19	-5.57	-	-	-	2.65
DFS GIF - AMERICAN EQUITY VALUE - DESJARDINS									
Series 1 (431)	-9.70	-18.75	-15.57	-18.75	-12.12	-1.99	1.55	7.13	2.05
Series 3 (435)	-9.76	-18.74	-15.43	-18.74	-11.68	-1.42	2.12	7.68	0.89
Series 5 (S435)	-9.78	-18.67	-15.35	-18.67	-11.49	-1.26	2.28	7.81	4.33
Series 6 (S436C)	-9.69	-18.62	-15.21	-18.62	-11.39	-1.06	2.47	-	5.87
Series 7 (S437A)	-9.63	-18.49	-14.98	-18.49	-10.84	-0.50	3.06	-	6.45
Series 8 (S438C)	-9.70	-18.52	-15.03	-18.52	-11.05	-	-	-	-2.62
DFS GIF - GLOBAL DIVIDEND - DESJARDINS									
Series 5 (S875)	-11.30	-18.65	-15.77	-18.65	-14.77	-3.22	-0.23	-	6.19
Series 6 (S876C)	-11.40	-18.67	-15.81	-18.67	-14.94	-3.31	-0.32	-	2.32
Series 7 (S877A)	-11.23	-18.54	-15.53	-18.54	-14.31	-2.76	0.19	-	2.84
Series 8 (S878C)	-11.13	-18.46	-15.58	-18.46	-14.47	-	-	-	-4.76
DFS GIF - GLOBAL EQUITY - DESJARDINS									
Series 5 (S045)	-8.48	-12.21	-9.22	-12.21	-	-	-	-	-9.40
Series 6 (S046C)	-8.28	-12.02	-9.02	-12.02	-	-	-	-	-9.20
Series 7 (S047A)	-8.27	-11.82	-9.00	-11.82	-	-	-	-	-9.00
Series 8 (S048C)	-8.28	-12.02	-9.02	-12.02	-	-	-	-	-9.20
DFS GIF - GLOBAL EQUITY - MFS									
Series 3 (775)	-9.14	-13.26	-8.33	-13.26	-4.08	3.30	3.69	5.28	6.01
Series 5 (S775)	-9.02	-13.08	-8.25	-13.08	-3.71	3.75	4.19	5.77	0.68
Series 6 (S776C)	-9.09	-13.15	-8.16	-13.15	-3.74	3.73	4.13	-	6.16
Series 7 (S777A)	-8.97	-12.93	-7.84	-12.93	-3.14	4.25	4.64	-	6.66
Series 8 (S778C)	-9.04	-12.90	-7.90	-12.90	-3.39	-	-	-	1.33
DFS GIF - INTERNATIONAL EQUITY - MFS									
Series 1 (401)	-8.67	-14.03	-8.80	-14.03	-6.00	1.58	1.05	3.18	1.23
Series 3 (405)	-8.58	-13.95	-8.70	-13.95	-5.76	1.82	1.25	3.32	0.48
Series 5 (S405)	-8.60	-13.82	-8.39	-13.82	-5.07	2.68	2.13	4.21	-0.04
Series 6 (S406C)	-8.57	-13.91	-8.43	-13.91	-5.35	2.37	1.84	-	3.56
Series 7 (S407A)	-8.46	-13.67	-8.20	-13.67	-4.78	2.93	2.36	-	4.08
Series 8 (S408C)	-8.49	-13.70	-8.32	-13.70	-4.90	-	-	-	-1.56
DFS GIF - INTERNATIONAL EQUITY GROWTH - DESJARDINS									
Series 5 (S895)	-2.82	-4.51	7.20	-4.51	5.15	8.96	6.17	-	11.09
Series 6 (S896C)	-2.82	-4.53	7.20	-4.53	5.27	9.13	6.34	-	7.09
Series 7 (S897A)	-2.75	-4.30	7.60	-4.30	5.84	9.64	6.82	-	7.54
Series 8 (S898C)	-2.64	-4.44	7.50	-4.44	5.74	-	-	-	1.64

*Past performance is no assurance or indicator of future returns. The indicated rates of return in this communication are historical annual compound total returns, net of management fees. They include changes in net asset value and reinvestment of all distributions, but do not take into account any sales, redemption, or other charges payable by an investor, which would reduce returns. There is no assurance that any Fund will achieve its investment objective. Each Fund's performance should be considered in light of the investment objective and policies described in the Contract and Information Folder. Per unit calculations are based on prices determined at the end of the business day and are subject to change without notice. Every effort has been made to ensure that facts and data contained herein are accurate at the time of publication. However, DFS cannot guarantee that they are accurate or complete or that they will be current at all times and accepts no responsibility for any loss arising from any use of or reliance on the information contained herein.

Fidelity True North® is a registered trademark of FMR Corp. Used with permission.

The Desjardins Financial Security Guaranteed Investment Funds are established by Desjardins Financial Security.

Desjardins Insurance refers to Desjardins Financial Security Life Assurance Company.

